

Spromberg East

Spromberg Canyon Road
Chelan County
Leavenworth, WA

Chelan county tree farm with merchantable timber as well as high quality Douglas-fir reproduction

Good access with stunning territorial views surrounded by national forest

Parcel ID 251723000000

Size 640 acres

Price \$399,000



Driving Directions

From Leavenworth travel north on Chumstick Highway for approximately 3 miles to Spromberg Canyon Road

Turn left on Spromberg Canyon Road and continue for approximately 0.6 miles to large metal gate on left

Travel through gate for approximately 0.75 miles to property

Location



Contact

Tom Shay
360.868.7466
tshay@kiddermathews.com

Mike Flanagan
360.790.8730
mikef@kiddermathews.com
forestland.kiddermathews.com

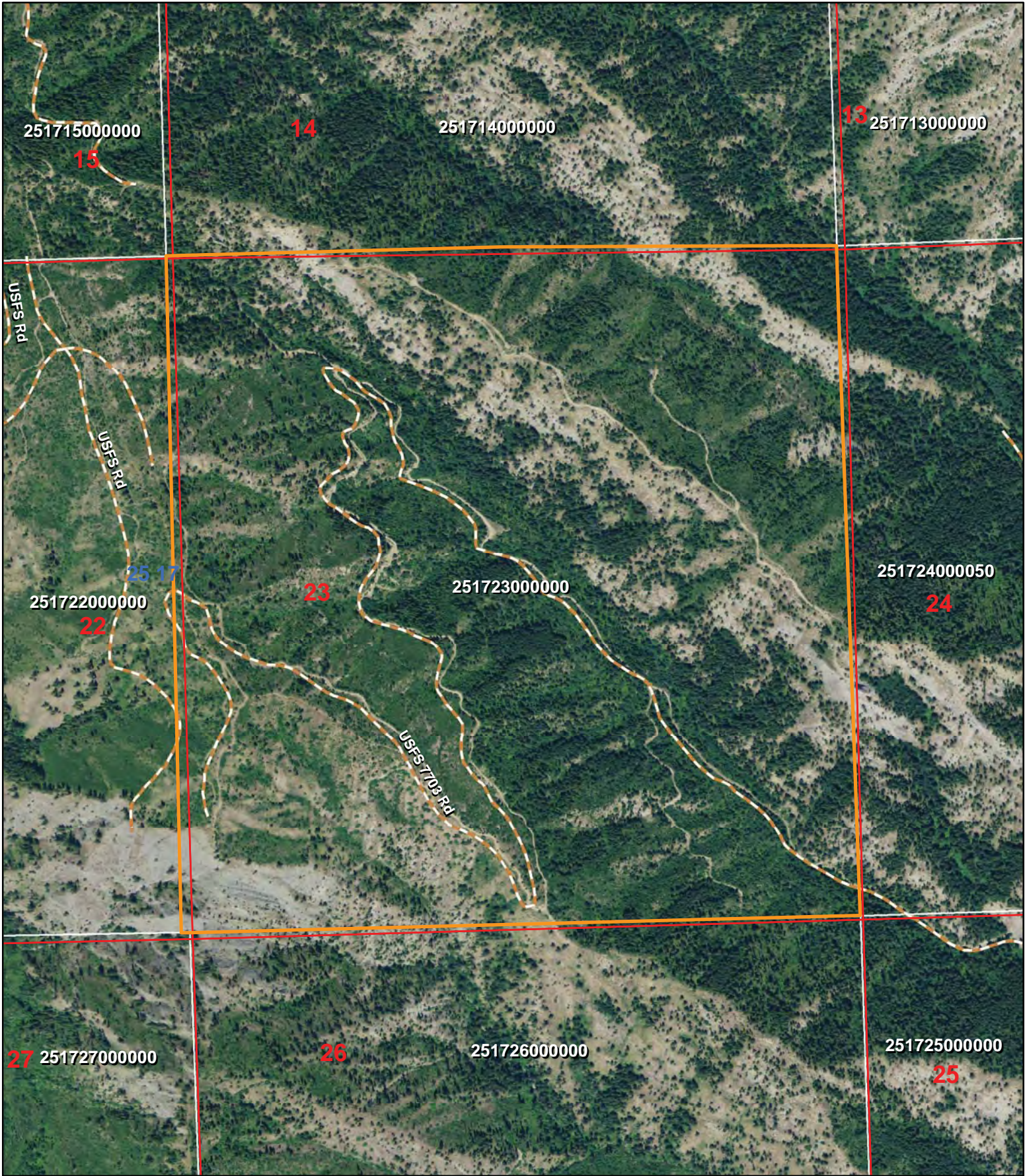


Photo Date: 2009

Legend

- Sections
- Townships
- County
- Roads
- Railroads
- Parcels
- Parcel 251723000000

T25N/R17E/S23
Chelan County, WA

1,000 500 0 1,000 Feet



This information supplied herein is from sources we deem reliable. It is provided without any representation, warranty or guarantee, expressed or implied as to its accuracy. Prospective Buyer or Tenant should conduct an independent investigation and verification of all matters deemed to be material, including, but not limited to, statements of income and expenses. Consult your attorney, accountant, or other professional advisor.